

1164

IMPORTANT:

2le65

HOW YOUR SOLAR LIGHT WORKS

**READ AND FOLLOW ALL INSTRUCTIONS CAREFULLY BEFORE OPERATION YOUR SOLAR LIGHT.
SAVE THIS MANUAL FOR FUTURE REFERENCE.**

This product contains a rechargeable battery. When the battery life is exhausted, the battery must be recycled or disposed of properly. For additional information regarding disposal, contact your local country solid waste authority. **DO NOT DISPOSE OF BATTERY IN FIRE.**

The selected location should not be near a nighttime light source such as a porch light or street light, as these might keep the solar lights from automatically turning on. The solar lights should not be placed closer than 5 feet from one another. This could cause the solar lights to flicker from the adjacent light source.

Cleaning

It is important that the solar panel is kept free of dirt and debris. A dirty solar panel will not allow the battery to fully charge. This will shorten the life of the battery and cause the light to malfunction. Clean regularly with a dampened cloth paper towel.

Storage Tips

Solar lights can be left outside year round, even in cold weather, however, if you wish to store your light indoors for more than two or three days, follow these steps to prevent damage to rechargeable batteries.

Store at room temperature in a dry location.

Store solar light where it can receive some sunlight or room light each day. The battery needs light to maintain a charge during storage.

During prolonged storage, units must be fully discharged and charged once every month or remove batteries and replace with new Ni-Cd rechargeable batteries when ready for use. Check and replace batteries periodically throughout the year.

Do not store solar lights in a box or a dark room without a source of light on the solar panel. This will damage the batteries and prevent their ability to hold a charge.

For best performance, do not store for prolonged periods.

Troubleshooting information

If your solar light does not turn on at night, it may be caused by one of the following conditions.

Battery is not fully charged or needs replacement.

Make sure your light is located in an area where the solar panel gets the maximum amount of full, direct sunlight every day. Allow sunlight to recharge the battery for a FULL, SUNNY DAY.

If the weather has been cloudy or overcast during the day, the battery will not be recharged for operation at night. The solar light must have direct sunlight every day to fully charge the battery. If the solar light does not receive enough sunlight one day, it will recharge the next sunny day and resume normal operation.

Other light sources: If your solar lights are located too close to a street light, porch light or another solar light, it may not turn on automatically at night. Eliminate the other light source or receive your solar lights.

Dirty solar panel: A dirty solar panel will not allow the battery to fully charge. This will shorten the life of the battery and cause the light to malfunction. Clean regularly with a dampened cloth or paper towel.

After correcting the problem, check the light operation immediately after dark or in a dark room. If the light will only operate for a short time, the battery needs recharging.

Wintertime Tips

- Clean snow and debris off the solar panel to allow battery to recharge.
- Check and replace battery periodically throughout the year, especially after winter months.

LÁMPARA SOLAR FLOT

MODO DE EMPLEO

Para el primer uso, aflojar la parte cen reloj). Retirar esta parte para poder qu batería esté bien en contacto con el ; Volver a colocar correctamente la parti para que el conjunto sea bien hermético. La Lámpara solar flotante se iluminará. **¡IMPORTANTE!** - Colocar la lámpara sol primera puesta en marcha (panel sola alcanzar su plena capacidad.

INFORMACIÓN

En caso de que la lámpara solar no se e

- Asegurarse de que la Lámpara Solar exposición al sol. Dejar el aparato al
- Si el cielo está nublado todo el día, p La lámpara solar flotante requiere n
- Si la Lámpara Solar Flotante está dis que no se ilumine automáticamente distintos tipos de radiaciones lumin o desplazar el aparato.

ADVERTENCIAS - Pila recargable 1,2 V / Retirar las lámparas de la piscina antes ser peligroso para los eventuales nadac cm. Información a conservar.

Los productos eléctricos no deben ser c a este efecto. Dirijase a las autoridades

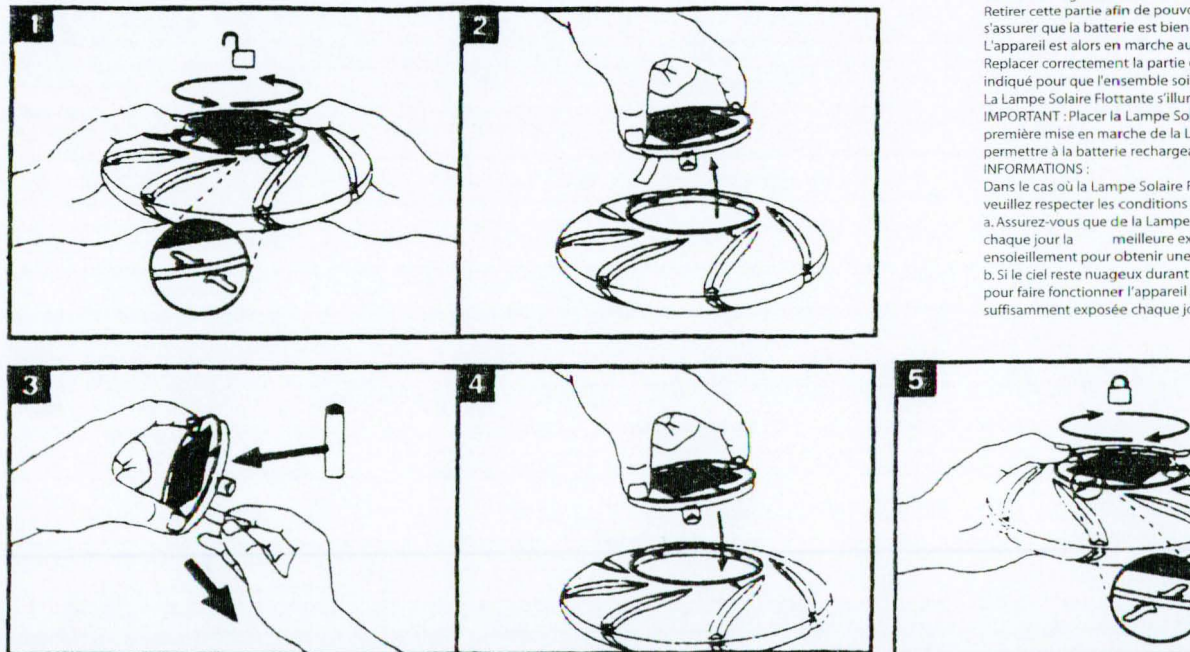
LAMPE SOLAIRE FLI

MODE D'EMPLOI

Lors de la première utilisation, dévi inverse des aiguilles d'une montre) Retirer cette partie afin de pouvoir s'assurer que la batterie est bien en L'appareil est alors en marche auto Replacer correctement la partie cer indiqué pour que l'ensemble soit b La Lampe Solaire Flottante s'illuminer **IMPORTANT :** Placer la Lampe Solai première mise en marche de la Lan permettre à la batterie rechargeabl

INFORMATIONS :

Dans le cas où la Lampe Solaire Flo veuillez respecter les conditions su a. Assurez-vous que de la Lampe Sc chaque jour la meilleure exp ensoleillement pour obtenir une cf b. Si le ciel reste nuageux durant to pour faire fonctionner l'appareil du suffisamment exposée chaque jour



BEFORE FIRST USE - Remove the white tab in the light fixture to charge battery. Install your solar light in direct sunlight and charge for a full, SUNNY day. The light will turn on automatically at night. Allow at least 10-12 cycles (i.e., 10-12 days and nights of charging and discharging) for the battery to charge to its full capacity.

The rechargeable battery must be allowed to fully charge to operate property. Partially charging the battery on a consistent basis will drastically reduce the life of the battery.

Select a location with full, direct sunlight. Shady locations will not allow the battery to charge fully and will reduce the hours of nighttime light.

NOTE: The rechargeable battery must be allowed to fully charge to operate property. Partially charging the battery on a consistent basis will drastically reduce the life of the battery.