



**NATURAL
CHEMISTRY**®

Performance Guaranteed

Natural Chemistry Product Resource Guide



**An easy-to-use
guide for all
Natural Chemistry
products**

TOLL-FREE TECHNICAL SUPPORT

1-800-753-1233

**FOR DISTRIBUTORS, PROFESSIONAL DEALERS,
SERVICE PROFESSIONALS & CONSUMERS:**

**For on-line help visit:
www.naturalchemistry.com**

Also:

- **MSDS forms**
- **Technical Q&As**
- **Recent press releases**
- **Downloadable artwork for marketing efforts**
- **Expanded website**
- **Comment/question form**
- **Updated company information**

**My Natural Chemistry
Retail Manager/Specialist is:**

e-mail:

_____@naturalchemistry.com

Corporate Office:

Natural Chemistry L.P.
40 Richards Avenue
Norwalk, CT 06854
Fax: 1-800-879-1233

Canadian Office:

Natural Chemistry Canada Inc.
17 Trent Drive
Campbellford, ON K0L1L0
Fax: 1-866-711-0584

Products are easy to sell - Marketing Features include:

- **Unique bottle design**
- **Clear directions, simple applications**
- **Trial size programs**
- **Merchandising aids: Distinctive display options, posters, banners, downloadable images from web (including high-resolution photos)**

Marketing Aids & Sales Programs

Natural Chemistry products are supported by a variety of promotional and sales programs, marketing aids and personal support from our regional managers

Our dedicated Regional Managers offer:

- **Personalized service**
- **In-field technical support**
- **Availability for sales events**

Table of Contents

INTRODUCTION:

A Letter from our President	2
Sell Natural Chemistry Products with Confidence!	3
Where Non-living Organic Contaminants Come From	3
Why Natural Chemistry's Enzymes?	4
Sources of Phosphates	5
Phosphate Do's & Don'ts	5
Why Natural Chemistry's PHOSfree Products?	6
Salt Water Magic Products	7
Salt Water Magic Liquid	7
Cell Protect	7
Salt Water Magic Monthly Kit	8

POOL PRODUCTS:

Pool Perfect	9
Pool Magic Spring & Fall	9
Pool First Aid	10
Spray-on Cleaner	10
Clear Concentrate	11
Clear and Perfect	11
PHOSfree	12
PHOSfree Commercial Strength	12
Pool Magic Spring & Fall + PHOSfree	13
Pool Perfect + PHOSfree	13
PHOSfloc	14
Instant Pool Water Conditioner	14
Foundation	15
SCALEfree	15
STAINfree	16
STAINfree Extra Strength	16
METALfree	17
HASSLEfree Opening/Closing Kit	17
Purge	18
COVERfree	18
Clean & Perfect	19
Filter Perfect	19

SPA PRODUCTS:

Spa Perfect	20
Spa Purge	20
Spa Stain & Scale	21

SPA PRODUCTS *continued:*

Spa METALfree	21
Spa Defoamer	22
Spa Clear	22
Spa Foundation	23
Spa PHOSfree	23
Spa Bromine Start	24
Spa Bromine Tablets	24
Spa Chlorine Concentrate	25
Spa Oxidizing Shock	25
Spa pH Increaser	26
Spa pH Decreaser	26
Spa Calcium Hardness Increaser	27
Spa Alkalinity Increaser	27

COMMERCIAL PRODUCTS:

Pool Perfect Commercial AF	28
Spa Perfect Commercial AF	28
COVERfree Commercial	29
PHOSfree Commercial AF	29
Clean & Perfect Commercial	30
Purge Commercial	30
Clear & Perfect Commercial AF	31
Clear Commercial AF	31
STAINfree Extra Strength	32
Quick-Dissolve Stabilizer	33
Stain & Scale Control Commercial AF	33
Automatic Dosage Dispenser	34
Orthophosphate Test Kit	34

HOW TO:

General Opening & Closing	35
Plaster Pool Start-up Procedure	35
Clean Up Dead Algae	36
Treat Phosphates	36
Enjoy the Perfect Pool Program	37
Clear Cloudy Water	37
Reduce Chlorine Demand	38
Purge Hot Tub Plumbing & Jetted Bathtubs	38
Remove Metal Stains	39

A Letter From Our President

To All Our Partners,

Since 1989, Natural Chemistry L.P. has been providing people with safe, effective and alternative cleaning solutions for pools, spas, homes and gardens.

In the late 1980's, Robert Kulperger recognized a growing market demand for natural, yet reliable cleaning products. Being a chemical engineer, he was inspired by nature's ability to continually transform energy and matter quickly and efficiently. It occurred to him that he could harness this ability to eliminate unwanted non-living organic contaminants safely and naturally. Thus, Natural Chemistry was born.

Mr. Kulperger and I simultaneously began to manufacture and bottle natural cleaning solutions from both the United States and Canada. What started out as a small entrepreneurial venture gradually revolutionized the pool and spa industry.

Today, Natural Chemistry is the leading manufacturer of natural based products for pool and spa water treatment. In addition to the enzyme products that clean the water and reduce pool maintenance, Natural Chemistry also offers natural based solutions for phosphate removal.

The pool and spa product line are highly effective and friendly to people, pets and the planet. The feedback from customers is clear and simple, so simple in fact, it has become the slogan for pool and spa products:

Never Better, Never Easier!

Natural Chemistry also applies its enzyme technology and other natural sciences to the home & garden, pet care and vehicle washing industries. The company subscribes to the philosophy that:

"It's not enough to be naturally based, each product must outperform its non-friendly counterpart."

Natural Chemistry strives to be an environmentally and socially responsible company in everything that we do. We would like to set the industry benchmark for having high corporate standards; Natural Chemistry works in this respect to produce safe and highly effective consumer goods.

By working with Natural Chemistry, you are providing consumers with natural based cleaning solutions that are healthy for people and the planet. That is something to feel good about!

Sincerely,



Mark Munford
President, Natural Chemistry Canada Inc.

Sell Natural Chemistry Products with Confidence!

Natural Chemistry Saves You Money!

Natural Chemistry's enzymes provide:

- Perpetual enzymatic cleaning action that increases the life of filter media, saving customers from having to constantly replace costly filter elements, D.E. and messy sand beds
- Cost savings-the perpetual cleaning of enzyme products has allowed customers to save money on water and chemicals previously lost through constant back washing and spa draining
- A reduction in non-living organic waste and superior water quality

Natural Chemistry Saves You and Your Customers Time!

- Natural Chemistry products reduce the amount of time spent maintaining and troubleshooting your pool or spa. This means more time swimming and less time maintaining by way of increased filter cycles and not having to scrub water line buildup
- Because of more efficient water chemistry, frequent troubleshooting becomes a thing of the past
- No longer do customers have to spend hours every week fighting to maintain clear, trouble free water

Natural Chemistry - It works! We guarantee it!

- Natural Chemistry is the only water chemistry company which guarantees its products 100%, which means no risk to the customer

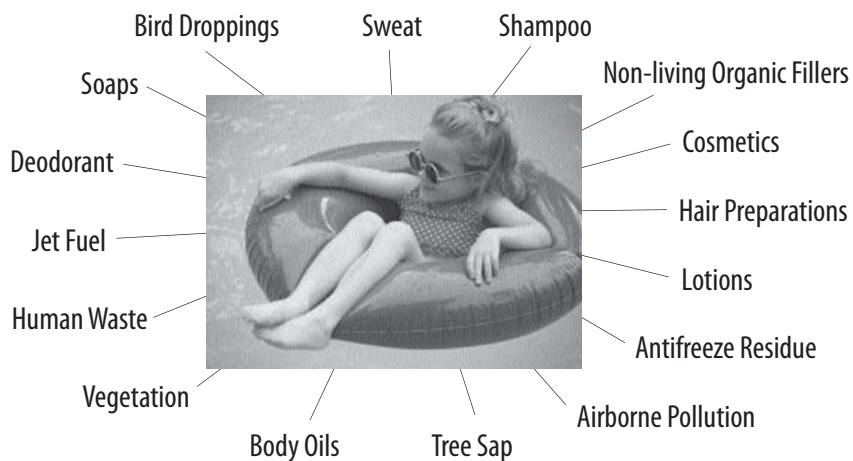
Natural Chemistry also guarantees that your store will make more money selling our products!

- Natural Chemistry products guarantee repeat business and loyal, happy customers
- The Perfect Pool Program (featuring **Pool Magic + PHOSfree** and **Pool Perfect + PHOSfree**) generates more profits per turn. No phosphates, no problems!

Where Non-living Organic Contaminants Come From

Illustrated to the right is just a small sampling of the various sources of non-living organics.

Natural Chemistry's broad spectrum enzyme formulas will remove all varieties of non-living organics from your pool and spa water.



Manufactured then blended:



**Primarily
Fats & Oils**

Remember...

Since non-living organics come from a broad range of sources, you want enzymes that cover that broad range of sources.

Otherwise...

You will be leaving some non-living organic waste behind to cause future problems in the pool water.

Natural Chemistry has you covered!

Why Natural Chemistry's Enzymes?

Natural Chemistry's enzymes are created through the fermentation of a broad spectrum of annually renewable sources such as malt, botanicals and molasses. Each product is formulated to break down specific unwanted non-living organic materials molecule by molecule, until they are reduced to their elemental building blocks - such as carbon dioxide and water.

Natural Chemistry's enzymes are:

- Highly effective	- Non-toxic	- 100% biodegradable
- Non-corrosive	- Safe and easy to use	- 100% environmentally friendly
- Bacteria free		

At Natural Chemistry we always use natural processes to yield natural results.

"Natural" vs. "Man-Made" Enzymes

Both natural and man-made enzymes come from the natural world. There are, however, major differences between them. Natural Chemistry's enzymes are formed by fermentation. They are made up of a complex set of ingredients that yield many types of enzymes and by-products, the result of which is equilibrium, or a balanced state.

The process of fermentation produces a broad spectrum of balanced natural enzymes that combat a vast variety of non-living organics. This is what makes natural enzymes so effective in pool and spa water. Pools and spas contain a wide assortment of non-living organic contaminants.

Comparatively, manufactured enzymes are isolated. They are made in sterile conditions with few by-products. Often unbalanced when blended, some manufactured enzymes may attack and break each other down. This can lead to a decline in effectiveness and reliability.

Blending creates a much narrower focus with higher concentrations of a few classes of enzymes rather than the broad spectrum lower concentration produced by fermentation. At face value it may seem this could be a benefit of manufacturing, but as with many things "more is not always better." With enzymes a little goes a long way; each enzyme molecule is capable of creating thousands of reactions.

Thus a broad spectrum of coverage is much more advantageous than high concentrations of a few classes at most. In addition, high concentrations of any one specific enzyme can lead to eye and skin irritation.

Enzymes in Pools & Spas

Traditionally people have relied solely on chemicals to maintain their pools and spas. Sanitizers have been responsible for two functions: killing bacteria and/or viruses and other living organisms, and burning off organic material in the water. While sanitizers are very effective at killing bacteria and disease, they are often not very effective in the oxidation of non-living organics in pool & spa water.

Clarifiers, flocs and various filter aids have taken their best shot, once again with limited results. Non-living organics illustrated on the previous page can be eliminated best with one of nature's own biochemical wonders: the enzyme. Non-living organics, as illustrated on the previous page, take on and eliminate the non-living organic workload for the sanitizer. Sanitizers are still necessary to kill bacteria, viruses and other living organisms.

Natural enzymes work by biodegrading the non-living organics in pools, actually breaking them down to their original building blocks, such as carbon dioxide and water, which are essentially reabsorbed back into the pool or spa water.

Common Misconceptions about Enzymes:

- | | |
|---|---|
| - Water clarifiers are the same as enzymes | - All enzymes are the same and achieve the same results |
| - Natural Chemistry's enzymes are just detergent | - Natural Chemistry's enzymes contain copper |
| - Enzymes do not have a benefit on a biguanide system | - All Natural Chemistry's enzymes are the same product in different bottles |

Natural Chemistry = Quality Enzymes:

- Natural Chemistry is the leader in natural enzyme technology
- Natural Chemistry is the only company which believes enough in its products to guarantee them, unconditionally
- Natural Chemistry is the only true natural enzyme product line on the market

Sources of Phosphates

- Pool chemicals containing: phosphoric acid, phosphonic acid & phosphonates which include most metal removers and sequestering agents
- Personal hygiene products
- Soaps and detergents
- Plant debris
- Fill water
- Body fluids and waste
- Fertilizers
- Rainwater
- Soil

Phosphates - Do's and Don'ts!

DO use our **PHOSfree** products with any sanitizer system including: chlorine, bromine, mineral systems, ionizers, biguanides and chlorine generators.

DO use our **PHOSfree** products with any filter media: sand, DE, and cartridge.

DO swim immediately after applying **PHOSfree** - it is non-toxic and safe for the environment.

DO use **METALfree** as your metal chelator, as it does not add orthophosphates to your water.

DON'T add more than recommended amount at one time.

DON'T add to a pool with live algae or a pool that is not clean or balanced.

DON'T add to a dirty filter.

DON'T believe the competition when it says all phosphate removal technology is the same. **PHOSfree** is unique in that it works on the pool filter, making it more efficient & easy to use

DON'T use (unless necessary) products loaded with phosphonic acid such as some metal & stain removers, tile and vinyl cleaners, filter cleaners and deck cleaners. Make sure you read the labels or MSDS - Use **METALfree** as your chelator of choice.

Why Natural Chemistry's PHOSfree Products?

Use Natural Chemistry's patented phosphate removal technology alone or as part of our **Perfect Pool Program** for enhanced pool water!

Pool Magic Spring & Fall + PHOSfree

Start-up:

- One bottle per 25,000 gallons
- Add to skimmer with circulation pump running
- Operate pool normally for 2 weeks
- Backwash/clean filter after 2 weeks and begin regular weekly maintenance with **Pool Perfect+PHOSfree** (if phosphates are below 100ppb)

Note:

Removes 300ppb of phosphates from 25,000 gallons.

Performance is reduced in water with high sanitizer levels. Optimum results are obtained when chlorine level is below 5ppm.

End of Season:

- 1 bottle per 25,000 gallons
- Add to skimmer with circulation pump running
- Close pool as normal

Same day closing trick:

Put system on recirculate (if this feature is available) and add product down the skimmer. Within a few minutes you will see the product disperse across the pool.

Program:

Included in the **Perfect Pool Program**



PHOSfree

- Dose per 10,000 gallons (see bottle for dosages)
- With circulation pump running, shake bottle well and add required dose to skimmer
- Run filter 8 hours/day for one week or 48 hours continually without cleaning/backwashing filter
- Re-test phosphate level after each application and repeat process until phosphates are below 100ppb
- Once phosphates are 100ppb or lower, begin using **Pool Perfect+PHOSfree** as a weekly maintenance

IMPORTANT:

Algae must be treated prior to testing or lowering phosphates.
Chlorine must be under 5ppm before testing phosphates.

PHOSfree is designed to form a thin coating on the filter media in order to trap phosphates as water flows through. This allows you to reduce phosphate levels to near zero levels.



Pool Perfect + PHOSfree

- 1 capful (4oz) per 8,000 gallons once a week
- With circulation pump running, simply add to your skimmer

Note:

Performance is reduced in water with high sanitizer levels.
Optimum results are obtained when chlorine level is below 5ppm.

Combines the benefit of enzyme technology and phosphate removal to keep phosphate levels low and water sparkling clean.



Salt Water Magic Products

The program for chlorine generator start-up & monthly maintenance!

Salt Water Magic products contain revolutionary technologies that are specifically engineered for pools using chlorine generators. This easy to use system simplifies start-up and allows the generator to work as designed by providing the perfect pool water environment continually. By applying this monthly, you will obtain a noticeable difference in your pool water. Results will include protection of the cell from life shortening damage and performance issues caused by scale as well as a reduction of non-living organics in the water. It is the **ONLY** salt water pool maintenance system with a **NO PHOSPHATES - NO PROBLEMS guarantee!**

Salt Water Magic Liquid

- Perpetually breaks down non-living organics
- Once a month concentrated formula
- Reduces maintenance
- Prevents waterline rings and unpleasant odors
- Helps maintain low levels of phosphates

Directions for use:

1. Shake bottle well before use.
2. Use entire bottle for pools up to 20,000 gallons.
3. With circulation pump running, add contents of 33.9oz bottle to pool skimmer.
4. Do not backwash or clean filter for at least 48 hours.

Note: Performance is reduced in water with high sanitizer levels. Optimum results are obtained when chlorine level is below 5ppm.



SKU#	PRODUCT SIZE	UNITS/CASE
07402	33.9oz	12

Cell Protect

- Controls the #1 issue affecting generator performance - SCALE
- Most advanced scale prevention formulation available
- Protects the cell from life shortening damage caused by scale
- Phosphate free

Directions for use:

Start Up Dosage:

1. Use 33.9oz per 20,000 gallons per month for best results.

Note: If water contains more than 400ppm calcium or 1ppm copper or iron - add 33.9oz per 10,000 gallons.

2. Distribute **Cell Protect** around the perimeter of the pool.

Maintenance Dosage:

1. Use 33.9oz per 20,000 gallons per month.
2. Distribute **Cell Protect** around the perimeter of the pool.

Recommended Dosage:

1. Use 33.9oz per 20,000 gallons per month.
2. Proceed with regular pool water maintenance.



SKU#	PRODUCT SIZE	UNITS/CASE
07407	33.9oz	12

Combining **Cell Protect** with **Pool Perfect+PHOSfree** or **Salt Water Magic Liquid** is the ultimate program designed for optimal generator performance!

Salt Water Magic Products continued

Salt Water Magic Monthly Kit

- Removes phosphate levels up to 300ppb to near zero
- Reduces non-living organics and calcium phosphate buildup on generator cell
- More efficient operation of chlorine generators
- Helps control the #1 issue affecting generator performance - SCALE

Kit Contains:

1-33.9oz **Salt Water Magic Liquid**

1-33.9oz **Cell Protect**

Directions for use:

1. Apply 1 bottle of **Salt Water Magic liquid** per 20,000 gallons down the skimmer monthly.
2. Apply 1 bottle of **Cell Protect** per 20,000 gallons around the perimeter of the pool monthly.



SKU#	PRODUCT SIZE	UNITS/CASE
07404	1 Kit	4

Pool Perfect

- Naturally cleans pool water and surfaces
- Gives water a soft, silky feel
- Reduces waterline rings and surface oils
- Broad spectrum enzymes eliminate non-living organic buildup
- Can be used with all filter medias and pool surfaces
- Reduces unpleasant odors
- Removes microscopic suspended non-living organic material that can cause water to look cloudy or dull

Directions for use:

1. Each week add 4oz (1 cap) per 8000 gallons to pool water.

Note:

Performance is reduced in water with high sanitizer levels.
Optimum results are obtained when chlorine level is below 5ppm.



POOL PRODUCTS

SKU#	PRODUCT SIZE	UNITS/CASE
03210	33.9oz	12
03220	67.6oz	6
03121	101.5oz	4

Pool Magic Spring & Fall

- Can be used with all filter medias and pool surfaces
- Compatible with all sanitizers
- Highly concentrated formula
- Prevents waterline rings over the winter
- Great way to make opening and closing fast and easy
- Specifically formulated for cooler water temperatures
- Helps preserve pool liners and finishes

Directions for use:

1. Add 33.9oz per 25,000 gallons to pool water, at the beginning and end of the season.

Note:

Performance is reduced in water with high sanitizer levels.
Optimum results are obtained when chlorine level is below 5ppm.



SKU#	PRODUCT SIZE	UNITS/CASE
03722	33.9oz	12

Pool First Aid

- Cleans up dead algae, pollen and other forms of non-living organic contamination
- Combines a concentrated enzyme with an organic polymer clarifier
- Compatible with all sanitizers
- When your customers require an emergency clean-up, no product works better

Directions for use:

1. Add 2oz per 1000 gallons (1 cap treats 2000 gallons).
2. Broadcast **Pool First Aid** around the surface of the pool.
For optimum results, keep circulation running for 48 hours after application.
3. Can be used every two days until the pool is crystal clear.

Note: Performance is reduced in water with high sanitizer levels. Optimum results are obtained when chlorine level is below 5 ppm. Wait 48 hours to shock after adding this product. If water temperature is below 70°F, **Pool First Aid** will work more slowly. Allow additional time for results.



SKU#	PRODUCT SIZE	UNITS/CASE
03122	67.6oz	6

Spray-on Cleaner

- Powerful, easy to use, spray on applicator
- Less scrubbing and work
- pH neutral formula approved for all types of covers
- Works great on decks and patio furniture
- The easiest and most effective way to safely clean any cover or pool surface
- Will not affect pool water chemistry

General directions for sprayer use:

1. Attach **Spray-on Cleaner** bottle to garden hose.
2. Remove white plastic safety tab from hose-end sprayer.
3. Turn red solution valve forward to "on" position.
4. Turn water source on and then blue main water source valve to "on" position (top of sprayer).
5. Spray solution onto surface to be cleaned (allow to soak for several minutes).
6. Lightly brush heavily soiled areas if necessary.
7. Turn red solution valve back to "close" position and rinse.

Directions for use on pool covers:

1. Remove any loose debris from cover.
2. Follow the above directions for sprayer use, step 2-5.
3. Turn red solution valve back to "close" position and rinse cover.
4. Store cover as recommended by manufacturer.



SKU#	PRODUCT SIZE	UNITS/CASE
00177	32oz	12

Clear Concentrate

- All natural chitosan based clarifier
- Highest available concentration in the industry
- Non-toxic and biodegradable
- Clears cloudy water quickly
- Cannot be overdosed
- No mixing required

Directions for use:

1. Apply **Clear** at recommended dosage rate per gallons across pool water surface, concentrating on deep water areas.
2. Using flip squirt cap, apply **Clear** directly onto surface until you reach suggested amounts of ounces per gallons of water in your pool.
Standard Dosage Rate: 1oz per 7,000 gallons
Cloudy Water Dosage Rate: 1oz per 5,000 gallons
3. Run circulation pump system continually for at least six hours after application.

Note: Product is not affected by high sanitizer levels. It is acceptable to add this product and shock the pool at the same time.



SKU#	PRODUCT SIZE	UNITS/CASE
03555	32oz	12

POOL PRODUCTS

Clear and Perfect

- Quickly clears dull water
- Most technologically advanced pool water clarifier available
- Can be used with all filter medias
- Not pH sensitive, nor will it adversely affect the pH of pool water
- Ultimate 6-in-1 clarifier (agglomeration, coagulation, flocculation, adhesion, compaction & neutralization)

32oz Directions for use:

1. Squirt **Clear and Perfect** at recommended dosage rate per gallons of pool water over pool water surface, concentrating on deep water areas. **Note:** Do NOT overdose.
Standard Dosage Rate: 1oz per 6,000 gallons
Cloudy Water Dosage Rate: 1oz per 4,000 gallons
2. Apply onto surface until you reach suggested amount of ounces per gallons of pool water.
3. Run circulation pump continually for at least six hours after application.

8oz Directions for use:

1. Squirt **Clear and Perfect** over pool water surface, concentrating on deep water areas. **Note:** Do NOT overdose.
4oz (half of bottle) per 10,000 gallons
8oz (entire bottle) per 20,000 gallons
2. Run filter system continually for at least six hours after application.

Note: Do not use with **METALfree** or any other metal sequestering products.



SKU#	PRODUCT SIZE	UNITS/CASE
03544	8oz	12
03500	32oz	12

PHOSfree

- Most effective formulation available
- Works in the filter (no clouding of the pool water)
- Reduces phosphates down to near zero
- Reduces pool maintenance
- No Phosphates - No Problems

Directions for use:

1. Clean or backwash filter
2. Determine appropriate dose. * See chart below
3. Shake bottle. With circulation pump running, add dose to skimmer.
4. Run filter 8 hours per day for one week or 48 hours continually without backwashing or cleaning

Note: If DE filter pressure rises above normal, turn pump off for 10-15 seconds then turn back on. Repeat until pressure stays in normal range.

Phosphate Level	PHOSfree
300 or Less	0.5L or 16oz
600	1L or 32oz
900	1.5L or 48oz

*Do not add more than 1.5L at a time

Note: Retest water after each completed treatment.

Repeat until phosphate level is below 100ppb.

5. Once phosphate levels are 100ppb or less, begin maintenance with a weekly dose of **Pool Perfect+PHOSfree**.

Important: Algae must be treated prior to testing and lowering phosphates. Chlorine must be under 5ppm before testing phosphates.



SKU#	PRODUCT SIZE	UNITS/CASE
05221	67.6oz	6
05121	101.5oz	4

PHOSfree Commercial Strength

- Specifically designed for large water application
- Works on both the filter and in the pool for maximum phosphate removal
- Easily maintains low levels of phosphates in the largest volumes of water
- Strongest formulation available on the market

Directions for use:

1. Clean or backwash filter
2. Apply appropriate dose, see chart below.

Gallons of Pool Water	Phosphate level	
	1000ppb	2000ppb
10,000gal	Add 1/2L	Add 1L
20,000gal	Add 1L	Add 2L

3. Shake bottle. With circulation pump running add appropriate dose to skimmer
4. Clouding may occur. After 48 hours, vacuum to filter

Important: Do not add more than 1.5L (50oz or half a bottle) at a time. To treat higher phosphate levels, add 1.5L (50oz or half a bottle) every 24 hours until desired result is obtained.

Note: Retest water after each completed treatment. Repeat until phosphate level is below 100ppb. Algae must be treated prior to testing and lowering phosphates. Chlorine must be under 5ppm before testing phosphates.



SKU#	PRODUCT SIZE	UNITS/CASE
05236	101.5oz	4

Pool Magic Spring & Fall + PHOSfree

- Specifically formulated for cold water application
- Speeds clean up, readies the pool for trouble free maintenance
- All the benefits of **Pool Magic Spring & Fall** and **PHOSfree** combined
- Can be used under pool winter covers, ideal product for mesh covered pools
- End of season application reduces off season waterline rings and staining of pool surface by non-living organic contamination

Directions for use:

New Pools, Openings and Initial Phosphate Removal:

1. Shake well and use entire bottle for pools up to 25,000 gallons.
2. Add to skimmer with circulation pump running.
3. Operate pool normally for 2 weeks, then backwash/clean filter.
4. Begin regular weekly maintenance with **Pool Perfect+PHOSfree** (only if phosphates are below 100ppb).

End of season:

1. Anytime before closing, shake well and add entire bottle contents for pools up to 25,000 gallons.
2. Add to skimmer with circulation pump running.
3. Close pool normally

Note: Performance is reduced in water with high sanitizer levels. Optimum results are obtained when chlorine level is below 5ppm.

Same day closing trick: Put system on recirculate (if this feature is available) and add product down the skimmer. Within a few minutes you will see the product disperse across the pool.



SKU#	PRODUCT SIZE	UNITS/CASE
05141	33.9oz	12

Pool Perfect + PHOSfree

- Maintains phosphate level near zero
- Cleans waterline and filter while reducing surface oils and other non-living organics
- Broad spectrum enzymes reduce the buildup of non-living organic contamination
- All the benefits of **Pool Perfect** and **PHOSfree** combined
- Weekly dosage of **Pool Perfect+PHOSfree** will improve water quality and reduce maintenance

Directions for use:

1. Shake well before using. Contents settle.
2. Each week with the circulation pump running, add to skimmer 1 cap (4oz) per 8000 gallons.

Important: Use **PHOSfree** initially to lower phosphate level to near 100ppb before continuing with this maintenance product.

Note: Performance is reduced in water with high sanitizer levels. Optimum results are obtained when chlorine level is below 5ppm.



SKU#	PRODUCT SIZE	UNITS/CASE
05122	33.9oz	12
05235	67.6oz	6
05131	101.5oz	4

PHOSfloc

- Buffered to not harm pool surfaces
- Easy to use high-grade iron-free floc that dissolves instantly in water
- For pools with phosphate levels over 1000ppb
- Can be used to clear very cloudy “swamp water” pools quickly
- Easily vacuums to waste (check filter capabilities - **MUST** be vacuumed to waste)

Directions for use with filter bypass:

1. With circulation system on, adjust pool water pH to 7.2 and total alkalinity range to 80-120ppm **VERY IMPORTANT**
2. Add 4lbs per 10,000 gallons of **PHOSfloc** to a large bucket of water and mix.
3. Turn filter to recirculation (filter bypass) setting.
4. Add **PHOSfloc**/water mixture slowly to skimmer and allow water to circulate for 1 hour.

Note: DO NOT ADD DIRECTLY TO FILTER.

5. Turn system off and allow **PHOSfloc** to settle (this may take up to 12 hours).
6. Vacuum sediment to waste (Do not vacuum to filter).

Note: IF YOU CANNOT VACUUM TO WASTE WE HIGHLY RECOMMEND NOT USING THIS PRODUCT.

Directions for use without filter bypass:

1. Add 4lbs per 10,000 gallons of **PHOSfloc** to a large bucket of water and mix.
2. **With filter system off**, broadcast this mixture over the water while walking around the pool.
3. Allow **PHOSfloc** to settle- this may take up to 12 hours.
4. **VACUUM SEDIMENT TO WASTE** (Do not vacuum to filter).

Above procedure should reduce phosphate level to 600-800ppb

Important: it is necessary to further reduce phosphate level to near zero by using **PHOSfree** or **Pool Magic Spring & Fall+PHOSfree**



SKU#	PRODUCT SIZE	UNITS/CASE
07200	4 lbs	6

Instant Pool Water Conditioner

- Dissolves instantly
- Pool friendly pH
- Protects chlorine immediately
- Will not harm any equipment or pool surfaces

Directions for use:

1. Shake well.
2. With circulation pump running, pour **Instant Pool Water Conditioner** into pool skimmer slowly or pour directly into pool water, while walking around the perimeter of pool - brush to speed absorption.
3. Rinse container with pool water and shake.
4. Pour remaining rinse solution into skimmer or pool.

Dosage Tips:

1 gallon of **Instant Pool Water Conditioner** raises CYA levels by 32ppm per 10,000gal.

Note: If CYA level is less than 30ppm, calculate gallons of **Instant Pool Water Conditioner** needed using the following formula: 4oz added to 10,000 gallons = 1ppm increase of conditioner stabilizer level.



SKU#	PRODUCT SIZE	UNITS/CASE
07410	1/2 gal	6
07401	1 gal	4

Foundation

- Fast dissolving
- Multi borate blend
- pH friendly formula
- Noticeably softer feeling water
- Reduces phosphates
- Simplifies water balancing
- Water becomes unbelievably clear & sparkling

Directions for use:

Adjust water chemistry to dealer recommended levels.

1. Add entire content of one 5lbs per 6000 gallons or 16.5lbs per 18,000-22,000 gallons.

Note: pH must be below 7.8 before adding **Foundation**.

Check pH every 48 hours for 2 weeks to maintain a pH level no higher than 7.8. Adjust as necessary.

2. With circulation pump running, slowly add the required dosage of **Foundation** to pool skimmer.
3. If desired, **Foundation** can be added directly to the pool water (some short term cloudiness may occur).
4. Brush any residual material until dissolved.
5. Wait 20 minutes after adding **Foundation** before swimming in pool.



SKU#	PRODUCT SIZE	UNITS/CASE
07405	5 lbs	8
07415	16.5 lbs	1

SCALEfree

- Phosphate and acid free formula
- Compatible with all pool surfaces
- Compatible with most sanitizing systems
- Prevents calcium and mineral scale buildup
- Controls metal staining
- Protects the cell from life shortening damage caused by scale

Directions for use:

1. Add recommended initial dose of **SCALEfree** directly to pool.
2. For new plaster pool start-up or if water hardness level is above 500ppm, double the recommended dose.

Recommended Initial Dosages:

32oz per 10,000 gallons / 64oz per 20,000 gallons

Recommended Monthly Dosages:

5oz per 10,000 gallons / 10oz per 20,000 gallons

Note: Do not use with biguanides



SKU#	PRODUCT SIZE	UNITS/CASE
07511	67.6oz	6

STAINfree

- 100% citric acid
- Less expensive alternative to ascorbic acid
- All natural way to eliminate metal stains
- Effective on all pool surfaces

Directions for use:

1. Balance pool water.
2. Lower chlorine to at least 1ppm.
3. Add 1lb of **STAINfree** per 10,000 gallons of water.
4. With the circulation system on, walk around the pool and sprinkle the product evenly on the surface.
5. Brush the stained areas.
6. One hour after applying the **STAINfree**, add **METALfree** at a rate of 33.9oz per 20,000 gallons.
7. 24 hours after applying the **STAINfree** & **METALfree**, vacuum the entire surface, especially the bottom of the pool carefully.
8. Clean the filter. Sand filters should be backwashed twice, D.E and cartridge filters must be broken down and cleaned.
9. Test and balance water if necessary.

Note: Do not shock for 1 week after the stain removal process.

If chlorine level is low, add small amounts of chlorine. Do not exceed 2ppm.

10. **METALfree** is suggested to be used weekly to help prevent future staining:

Maintenance Dosage: 4oz per 10,000 gallons.

Note: A NON POLYMER FILTER AID MUST BE USED WITH CARTRIDGE OR SAND FILTER BEFORE **STAINfree** IS APPLIED.



SKU#	PRODUCT SIZE	UNITS/CASE
07400	1.75 lbs	12

STAINfree Extra Strength

- 100% ascorbic acid- premium stain fighter!
- The industry's leading ion-exchange metal stain remover
- All natural way to eliminate metal staining
- Compatible with all sanitizing systems

Directions for use:

1. Balance pool water (pH 7.2-7.4, Alkalinity 80-120, Hardness 200-400)
2. Lower chlorine to at least 1ppm.
3. Add 1lb per 10,000 gallons around the pool perimeter with pump running.
4. Brush pool thoroughly. After brushing, if stains are not completely removed add more **STAINfree Extra Strength**.
5. One hour later, add **METALfree** at a rate of 33.9oz per 20,000 gallons.
6. A pulp based filter aid **MUST** be added to your cartridge or sand filter. DE filter must be charged properly with DE.
7. Vacuum pool slowly and thoroughly.
8. After 24 hours clean out your filters. Sand filters: backwash for at least 3 minutes and then rinse for 2 minutes. Cartridge filters: clean filter and filter tank thoroughly. DE filters: backwash and recharge with DE.
9. Test and rebalance. DO NOT SHOCK THE POOL for at least 1 week.

Note: If chlorine level is low, add small amounts of chlorine. Do not exceed 2ppm.

10. Use **METALfree** weekly to guarantee a stain free pool.



SKU#	PRODUCT SIZE	UNITS/CASE
07395	1.75 lbs	12

METALfree

- Phosphate free
- Compatible with most sanitizers
- Powerful formula deactivates iron, copper and other trace minerals
- Prevents surface staining and water discoloration caused by metals in pool water
- Prevents calcium and mineral scale buildup

Directions for use:

1. Add 33.9oz of **METALfree** per 20,000 gallons of pool water.
2. Sprinkle in water around pool perimeter.

Note: DO NOT ADD THROUGH SKIMMER.

Maintenance Dosage:

1. Add one cap (4oz) per 10,000 gallons once a week.

METALfree will deactivate 1ppm of metal per 10,000 gallons.

Note: Do not use with biguanides.



SKU#	PRODUCT SIZE	UNITS/CASE
07001	33.9oz	12

POOL PRODUCTS

HASSLEfree Opening/Closing Kit

- Cold water formulation- works all winter long
- Cleans and protects all winter long
- Prevents staining
- Saves time & money

Kit contains:

- 1 - 33.9oz **Pool Magic+PHOSfree**
- 1 - 33.9oz **METALfree**
- 1 kit treats 20,000 gallons

Directions for use:

1. Pour 33.9 oz **Pool Magic+PHOSfree** slowly into the skimmer.
2. Broadcast 33.9 oz **METALfree** around the perimeter of the pool.



SKU#	PRODUCT SIZE	UNITS/CASE
08002	1 kit	4

Purge

- Restores pool and large spa plumbing to original condition
- Great for removing heavy non-living organic buildup
- Perfect for use before acid wash or resurfacing
- Helps reduce or eliminate clogged filters, foaming, bad odors, and more

Directions for use:

Minimum once per year, or as often as needed.

1. With circulation pump running, add 67.6oz **Purge** bottle to skimmer(s).

Note: 1 bottle of **Purge** treats 25,000 gallons under normal plumbing circumstances.

1 bottle of **Purge** for every 2 skimmers.

2. Circulate for 24 hours.
3. Backwash or clean filter.
4. After the 24 hours, shock the pool to boost sanitizer levels.
5. Proceed with regular pool water maintenance.



SKU#	PRODUCT SIZE	UNITS/CASE
03125	67.6oz	6

COVERfree

- Invisible barrier that conserves water and heating energy
- Most advanced mono-layer technology
- Helps conserve hundreds of gallons of pool water
- Reduces water evaporation
- Reduces heat loss

Directions for use:

1. Shake well.
2. Using the measuring guide on the side of bottle, squeeze recommended dose over surface of pool water.
3. Recommended dose: 4oz per 20,000 gallons (667sq. ft) per week.

Quick Reference:

Rectangular 18'X36' = 20,000 gallons

Round 28' = 20,000 gallons



SKU#	PRODUCT SIZE	UNITS/CASE
07101	16oz	12
07100	32oz	12

Clean & Perfect

- Natural, safe and non toxic formula
- Extremely powerful all purpose cleaner
- Ideal cleaner for spa covers, grills, steps, tiles - the uses are endless
- Ideal for any hard surface
- Removes oil buildup from pool decks
- Eliminates stains and odors

Directions for use:

Test small area for colorfastness before use

1. Apply directly on surface, let stand briefly, wipe clean and dry.
2. On old stains or built up grease and grime, work into surface with warm water, wait 3-5 minutes, wipe clean, rinse if necessary and dry.



SKU#	PRODUCT SIZE	UNITS/CASE
00176	24oz	12

POOL PRODUCTS

Filter Perfect

- Non-toxic formula
- Acid free, no fumes
- Non-foaming
- Powerful formula works on all filter types
- Improves filter efficiency, longer filter runs
- Easily disposed

Directions for use:

Directions for Cartridge and D.E. Filters:

1. Remove cartridge elements or D.E. grids from filter tank and hose off loose material.
2. In a pail, bucket or trash container with 5-10 gallons of water- add 33.9oz of **Filter Perfect**.
3. Place cartridge elements or D.E. grids in solution.
4. Soak for a minimum of 6 hours (preferably overnight).
5. Remove from solution and rinse thoroughly.

Note: Clean cartridge elements should be allowed to dry before reinstalling.

Directions for Sand Filters:

1. Have pump running and filter in backwash mode.
2. Suction should come primarily from skimmer- not main drain.
3. Add 33.9oz bottle of **Filter Perfect** to skimmer.
4. Once contents of bottle has entered the filter, turn pump off and put valve in either close or filter position for a minimum of 6 hours.
5. Turn pump on with filter set to backwash, run until water flows clear.

Note: Do not allow pump to run dry.

6. Return filter to normal operation.



SKU#	PRODUCT SIZE	UNITS/CASE
03215	33.9oz	12

Spa Perfect

- Natural, powerful broad spectrum enzymes biodegrade non-living organics
- Reduces spa maintenance
- Specifically formulated for hot water
- Prevents waterline rings, non-living organic staining and surface oils
- Makes water feel soft and silky
- Continually cleans spa filters to prolong filter cycles

Directions for use:

1. Use 1oz per 100 gallons of spa water per week.
2. One capful (4oz) per week treats a 400 gallon spa.
3. Use twice per week during periods of heavy use.

Note: Do not use with or immediately after shocking. Performance is reduced in water with high sanitizer levels. Optimum results are obtained when chlorine level is below 5ppm.



SKU#	PRODUCT SIZE	UNITS/CASE
04021	16oz	12
04131	33.9oz	12
04034	67.6oz	6

Spa Purge

- Removes non-living organic waste deposits from all spa plumbing
- Highly concentrated formula
- Non-toxic and environmentally friendly
- Restores spa plumbing to original condition
- Attacks root cause of maintenance problems caused by non-living organic contamination

Directions for use:

1. Remove cartridge filter elements.
2. With spa water temperature at 95°F or higher, add entire contents of bottle.
3. Run jets a minimum of 5 minutes. If excessive foaming occurs, turn jets off.
4. Maintain water temperature and allow spa to circulate overnight with jets off.
5. Drain, rinse and then refill spa and reinstall filter elements. Proceed with normal spa maintenance.

For Jetted Bathtubs:

1. With spa water temperature at 95°F or higher, add half bottle of **Spa Purge** (16oz) to water.
2. Run jets a minimum of 5 minutes. If excessive foaming occurs, turn jets off.
3. Let sit overnight, then drain.



SKU#	PRODUCT SIZE	UNITS/CASE
04137	33.9oz	12

Spa Stain & Scale

- Prevents calcium and mineral scale buildup
- Controls metal staining
- Phosphate and acid free formula
- Compatible with all spa surfaces and most sanitizing systems

Directions for use:

Initial Treatment of Fresh Fill:

1. Add 8oz per 200 gallons directly to spa water.

Weekly Maintenance:

1. Add 1oz per 400 gallons directly to spa water.

If water hardness level is above 500ppm, double the recommended dose.

Note: Do not use with biguanides.



SKU#	PRODUCT SIZE	UNITS/CASE
04122	16oz	12
04124	33.9oz	12

Spa METALfree

- Compatible with most sanitizing systems
- Deactivates iron, copper and other trace metals that can affect clarity and stain spa surfaces
- Will not add phosphates

Directions for use:

1. Add one capful (4oz) per 400 gallons directly to spa water immediately after initial fill and after each drain and refill.

Weekly Maintenance:

1. Add 1oz per 400 gallons weekly.

Note: Do not use with biguanides.



SKU#	PRODUCT SIZE	UNITS/CASE
04133	33.9oz	12

SPA PRODUCTS

Spa Defoamer

- Eliminate foam on spa water
- Compatible with all sanitizers and spa surfaces
- Specifically formulated for hot water
- Instantly controls and prevents foaming in spas

Directions for use:

1. Shake well before each use.
2. With circulation system running, add approximately ½ oz of **Spa Defoamer** directly to water.
3. Repeat as necessary.



SKU#	PRODUCT SIZE	UNITS/CASE
04012	16.9oz	12

Spa Clear

- All natural, chitosan based clarifier made from recycled crab shells
- Highly concentrated formula
- Non-toxic and environmentally friendly
- Compatible with all sanitizers and spa surfaces
- Specifically formulated for hot water
- Quickly clears cloudy water
- Cannot overdose

Directions for use:

1. Apply **Spa Clear** at recommended dosage rate across spa water surface, concentrating on deep water areas, until you reach suggested amount of ounces per gallons of water in your spa.
2. Run circulation pump continuously for at least six hours after application.

Standard Dosage Rate:

1. Add 1oz per 200 gallons of spa water.

Cloudy Water Dosage Rate:

1. Add 2oz per 100 gallons of spa water.



SKU#	PRODUCT SIZE	UNITS/CASE
04013	16oz	12
04015	32oz	12

Spa Foundation

- Polishes water for eye catching appeal
- Provides softer feeling water
- Special blend of mineral borates enhances water quality for ultimate bather comfort

Directions for use:

Initial Dose:

1. Start with a clean hot tub/spa and filter.
2. Adjust water balance to dealer recommended levels.
3. With circulation pump running, slowly add 6 level capfuls per 400 gallons to skimmer or closest return inlet to filter (some short term cloudiness may occur).
4. After allowing tub to circulate for 4 hours, check pH and adjust if necessary.

Weekly Maintenance Dosage:

With circulation pump running, slowly add ½ capful per 400 gallons to skimmer or closest return inlet to filter.



SKU#	PRODUCT SIZE	UNITS/CASE
04113	2 lbs	12

Spa PHOSfree

- Quickly & effectively removes phosphate levels to near zero
- Formulated specifically for hot water temperatures
- Extremely concentrated formula
- Adding **Spa PHOSfree** at start-up and on a weekly basis reduces and maintains phosphate levels to near zero

Directions for use:

Drain and Re-Fill or New Start Up:

1. Add 16oz (4 large capfuls) per 400 gallons directly to spa water with filter operating (temporary turbidity may be experienced with a new spa start-up).

Weekly Maintenance:

1. Add 1oz per 100 gallons weekly.



SKU#	PRODUCT SIZE	UNITS/CASE
04501	33.9oz	12

SPA PRODUCTS

Spa Bromine Start

- Establishes an instant bromine reserve once activated with oxidizing shock or bromine tablets
- Fast dissolving formula

Directions for use:

1. Add 2oz to 400 gallons of water to establish a bromine reserve.

Note: NCI threaded safety cap= ½ oz



SKU#	PRODUCT SIZE	UNITS/CASE
04108	2 lbs	12

Spa Bromine Tablets

- Provides an active bromine residual to sanitize spa water
- Controls bacteria and algae in spa water

Directions for use:

1. Before adding **Spa Bromine Tablets** in your spa, first add ½ oz of sodium bromide (**Spa Bromine Start**) for each 100 gallons of water.
2. Introduce 3 tablets per 300 gallons of spa water with the use of a floating tablet feeder or automatic brominator installed on the spa equipment.
3. Adjust tablet feeder or brominator to obtain an active bromine residual of at least 2ppm.
4. Maintain spa by adding 3 tablets per 300 gallons every 5-7 days or as needed to maintain an active bromine residual of 2ppm at all times.



SKU#	PRODUCT SIZE	UNITS/CASE
04109	1.5 lbs	12
04110	4 lbs	6

Spa Chlorine Concentrate

- Specifically designed for spas and hot tubs
- Concentrated formula
- Controls bacteria and algae in spa water
- pH neutral

Directions for use:

1. With pump on, add ½ teaspoon of this product per 100 gallons (or 5 teaspoons per 1,000 gallons) as initial treatment.
2. Repeat at 15 to 20 minute intervals until a residual of 3-5ppm of available chlorine is established as determined by a test kit.

Superchlorination:

1. Use one teaspoon of this product per 100 gallons of water (or 1/4 cup per 1,000 gallons).

Note: Superchlorination may be needed on a nightly basis in a heavily used spa or as infrequently as once a week in a moderately used spa.



SKU#	PRODUCT SIZE	UNITS/CASE
04111	2 lbs	12
04112	4 lbs	6

Spa Oxidizing Shock

- Powerful oxygen-based oxidizer destroys spa water contaminants
- Compatible with chlorine and bromine
- Safe for use on all spa surfaces
- Eliminates odors and build-up caused by spa water contamination
- Quickly dissolves

Directions for use:

Initial Treatment:

1. Add 2oz per 300 gallons.

Regular Treatment:

1. After each time the spa is used, add 1oz per 300 gallons.
2. Add 1oz per 300 gallons each week if spa is not being used.
3. Add product with circulation pump running.
4. Continue circulating for at least 30 minutes.
5. Turn jets on and off once or twice after adding the product to improve treatment.

Note:

NCI threaded safety cap = 1/2oz

NCI large over cap = 5oz



SKU#	PRODUCT SIZE	UNITS/CASE
04106	2 lbs	12
04107	4 lbs	6

Spa pH Increaser

- Brings pH level to an ideal range
- Reduces skin and eye irritation

Directions for use:

1. Test spa water for pH level.
2. Compare pH test results to chart below to determine appropriate amount of product needed to make adjustment.
3. With spa not in use and circulation pump operating, add required amount directly into spa water.
4. Continue to circulate water a minimum of 30 minutes
5. Re-test, adjust if necessary.

SPA VOLUME	All values are in dry ounces			
	pH 7.4 +	pH 7.3	pH 7.2	pH 7.2 -
200 gallons	not req'd	¼	½	¾
400 gallons	not req'd	½	1	1½
800 gallons	not req'd	1	2	3

Note: NCI threaded cap = ½ oz



SKU#	PRODUCT SIZE	UNITS/CASE
04102	2 lbs	12

Spa pH Decreaser

- Brings pH level to an ideal range
- Reduces skin & eye irritation

Directions for use:

1. Test spa water for pH level.
2. Compare pH test results to chart below to determine appropriate amount of product needed to make adjustment.
3. With spa not in use and circulation pump operating, add required amount directly into spa water.
4. Continue to circulate water a minimum of 30 minutes.
5. Re-test, adjust if necessary.

SPA VOLUME	All values are in dry weight				
	pH 7.2-7.6	pH 7.6-7.8	pH 7.8-8.0	pH 8.0-8.4	pH 8.4 +
200 gallons	not req'd	0.5 tsp	0.75 tsp	1.5 tsp	2 tsp
400 gallons	not req'd	0.75 tsp	1.5 tsp	3 tsp	3.5 tsp
800 gallons	not req'd	1.5 tsp	3 tsp	6 tsp	7 tsp

Note: NCI threaded cap = 2 tsp or 1/2oz



SKU#	PRODUCT SIZE	UNITS/CASE
04103	2 lbs	12

Spa Calcium Hardness Increaser

- Brings calcium hardness level to an ideal range
- Reduces cloudy water caused by low calcium levels

Directions for use:

1. Test spa water for calcium hardness level.
2. Compare test results to chart below to determine appropriate amount of product necessary to make adjustment.
3. With spa circulation pump on high speed, add required amount directly into spa water.
4. Continue circulating water a minimum of 20 minutes.
5. Retest and adjust if necessary.

Note: Do not pre-dissolve this treatment as heat is generated when it contacts water.

All values are in dry ounces				
SPA VOLUME	20ppm	40ppm	80ppm	100ppm
200 gallons	1	1½	3¼	4¼
400 gallons	1½	3¼	6½	8
800 gallons	3	6½	13	16

Note: NCI threaded cap = ½ oz
 NCI large over cap = 4 oz



SKU#	PRODUCT SIZE	UNITS/CASE
04105	1.75 lbs	12

Spa Alkalinity Increaser

- Brings alkalinity level to ideal range
- Helps maintain a balanced water chemistry

Directions for use:

1. Test spa water for total alkalinity level.
2. Compare test results to chart below to determine appropriate amount of product necessary to make adjustment.
3. With spa circulation pump on high speed, add required amount directly into spa water.
4. Continue circulating water a minimum of 20 minutes.

All values are in dry ounces				
SPA VOLUME	20ppm	40ppm	80ppm	100ppm
200 gallons	1	2	4	5
400 gallons	2	4	8	10
800 gallons	4	8	16	20

Note: NCI threaded cap = ½ oz
 NCI large over cap = 4 ½ oz



SKU#	PRODUCT SIZE	UNITS/CASE
04104	2 lbs	12

SPA PRODUCTS

Pool Perfect Commercial AF

- 50% stronger than our original formula, with a built-in clarifier
- Positively affects ORP
- Natural, harmless and non-irritating to people
- Broad spectrum enzyme formula powerfully biodegrades non-living contaminants
- Specifically formulated for commercial and institutional pool water environments
- Reduces waterline ring, clogged filters, unpleasant odors, eye irritation and cloudiness

Directions for use:

Initial Start-Up:

In addition to the maintenance dose, add 1oz for every 1000 gallons all at once, every 7 days for the first 2-5 weeks until desired results are achieved. This additional amount is necessary to speed the removal of the pre-existing non-living organic load.

Maintenance Dose:

Light to medium bather/non-living organic load:

1oz for every 3000 gallons per week.

Heavy bather/non-living organic load:

1oz for every 2000 gallons per week (most common commercial pool dosage rate).

Very heavy bather/non-living organic load:

1oz for every 1000 gallons per week.

For best results, feed small amounts multiple times per day with Natural Chemistry's **Automatic Dosage Dispenser**. Product can also be manually applied directly to pool.

Note: Performance is reduced in water with high sanitizer levels. Optimum results are obtained when chlorine level is below 5ppm.



SKU#	PRODUCT SIZE	UNITS/CASE
03257	1 gallon	4
03250	5 gallon	1

Spa Perfect Commercial AF

- 250% stronger than our original formula
- Natural, harmless and non-irritating to people
- Broad spectrum enzyme formula powerfully biodegrades non-living contaminants
- Reduces foaming, waterline ring, clogged filters, unpleasant odors, eye irritation and cloudiness
- Specifically formulated for commercial hot water environments with high bather loads

Directions for use:

1. Use 1 oz per 100 gallons of water per week.
2. For best results, feed small amounts multiple times per day with Natural Chemistry's **Automatic Dosage Dispenser**.

Note: Performance is reduced in water with high sanitizer levels. Optimum results are obtained when chlorine level is below 5ppm.



SKU#	PRODUCT SIZE	UNITS/CASE
04051	1 gallon	4
04100	5 gallon	1

COVERfree Commercial

- Invisible barrier that conserves water and heating energy
- Most advanced mono-layer technology
- Helps conserve hundreds of gallons of pool water
- Reduces water evaporation
- Reduces heat loss

Directions for use:

1. Add 4oz per 675 sq ft of water surface area per week. Add directly to the pool.
2. For best results, feed small amounts multiple times per day with Natural Chemistry's **Automatic Dosage Dispenser**.



SKU#	PRODUCT SIZE	UNITS/CASE
07109	1 gallon	4
07105	5 gallon	1

PHOSfree Commercial AF

- Specifically designed for large water application
- Highly concentrated
- Easily maintains low levels of phosphates in the largest volumes of water
- Perfect compliment to Natural Chemistry's **Automatic Dosage Dispenser**

Directions for use:

With the circulation system operating:

1. Maintain proper chemical levels.
2. Backwash/clean filter.
3. Slowly add **PHOSfree Commercial AF** directly to: pool, skimmer, gutter or surge tank.
4. Backwash filter as necessary.
5. Apply in accordance with your state and local pool regulations.
6. RE-TEST PHOSPHATE LEVELS AFTER 48 HOURS.

Note: Removing high phosphate levels may temporarily cause pool water cloudiness/turbidity.

For best results and to reduce the possibility of cloudy water, use with Natural Chemistry's **Automatic Dosage Dispenser**.

Maintenance Dose: Weekly, add 1oz of **PHOSfree Commercial AF** per 6,000 gallons of pool water.

Important: Algae must be treated, prior to testing or lowering phosphates. Chlorine must be under 5ppm before testing phosphates.



SKU#	PRODUCT SIZE	UNITS/CASE
05257	1 gallon	4
05251	5 gallon	1

Dosage Chart: Phosphate reduction varies based on phosphate concentrations. Recommendations are for estimation purposes only.

PPB	100,000 gallons	200,000 gallons	300,000 gallons
500	16oz / 473mL	32oz / 946mL	48oz / 1420mL
1000	32oz / 946mL	64oz / 1893mL	96oz/2839mL
2000	64oz / 1893mL	128oz / 3785mL	192oz/5678mL
5000	160oz / 4732mL	320oz / 9464mL	480oz/14,195mL

Clean & Perfect Commercial

- Unique and powerful blend of enzymes and surfactants
- Cleans the toughest grease, dirt and grime with ease
- Will not harm any hard surface
- The uses are endless... try it on: waterline rings, water slides, deck equipment, deck furniture, etc.

Directions for use:

Note: Test small area for colorfastness before use.

1. Apply directly on surface.
2. Let stand a few minutes.
3. Rub with a coarse sponge, wipe clean, dry.
4. On old stains, work into surface with warm water, wait 5 minutes, wipe clean, dry.



SKU#	PRODUCT SIZE	UNITS/CASE
86350	5 gallon	1

Purge Commercial

- Restores pool and large spa plumbing to original condition
- Great for removing heavy non-living organic buildup
- Helps reduce or eliminate clogged filters, foaming, bad odors, and more

Directions for use (Swimming Pools):

Minimum once per year or as often as needed.

Note: Close pool to swimmers until **Purge Commercial** process is complete.

1. Add 3 quarts of **Purge Commercial** per 10,000 gallons of pool water.
With circulation pump running, add equal amounts of dosage to all skimmers or gutter.
2. Circulate for 24 hours.
3. Backwash or clean filter.
4. Shock the pool to boost sanitizer levels.
5. Proceed with regular pool water maintenance.

Once **Purge Commercial** process is complete, begin a weekly maintenance of **Pool Perfect Commercial AF** to maintain low levels of non-living organics.

Directions for use (Spas):

As often as needed. Note: Close spa to bathers until **Purge Commercial** process is complete.

Day 1:

1. Backwash the sand filter or remove the cartridge filter elements.
2. Turn off, close, and/or bypass all chemical feed systems.
3. Add 1 quart of **Purge Commercial** per 500 gallons of spa water through the skimmers.
4. Run jets for a minimum of 20 minutes. *It is normal for some foaming to occur.* If foam starts to overflow, turn the jets off.

Day 2:

1. Run jets for 1 minute.
2. Backwash the sand filter if applicable.
3. Drain, rinse and then refill spa.
4. Thoroughly backwash and rinse the sand filter with fresh water, or reinstall clean cartridge filter elements.
5. Balance the water.
6. Turn the chemical feed systems back on.
7. Proceed with normal spa maintenance and operation.



SKU#	PRODUCT SIZE	UNITS/CASE
03130	1 gallon	4

Clear & Perfect Commercial AF

- Specifically engineered to clarify large bodies of water
- Triple polymer formulation is extremely fast acting
- Effective clarifier that will handle any demanding situation
- Highly concentrated formula is more effective on broad range of particulates and debris than other clarifiers

Directions for use:

Clear & Perfect may be oxidized by high levels of sanitizers. Do not use **Clear & Perfect** within 24 hours of using **METALfree** or any other metal remover or stain remover.

1. Mix required dosage of clarifier concentrate into large bucket or pail of water (minimum 2-5 gallons of water).

Note: It is very important to properly dilute the clarifier with water prior to application due to its high concentration.

2. Broadcast mixture around perimeter of pool concentrating on deep water areas. For increased product performance, apply clarifier with a hose end sprayer/applicator. Spray over entire pool, concentrating on deep water areas.

Note: Do not overdose.

Initial and Trouble Shooting Dosage Rate:

1oz per 4,000 gallons of pool water

Weekly Maintenance Dosage Rate:

1oz per 6,000 gallons of pool water



SKU#	PRODUCT SIZE	UNITS/CASE
86401	5 gallon	1

Clear Commercial AF

- All natural concentrated (yet affordable) Chitosan based formula
- **Clear** can be hand added directly to the pool or auto-dosed
- Can not be overdosed
- An environmentally friendly clarifier that is extremely effective clearing large bodies of water

Directions for use:

1. Apply **Clear** at recommended dosage rate per gallons of pool water across pool water surface. Concentrate on deep water areas.

2. Apply **Clear** directly onto surface until you reach suggested amount of ounces per gallons of water in pool.

3. Run circulation system continually for at least 6 hours after application.

Standard Dosage Rate: (no premixing required)

1oz per 7,000 gallons of pool water

Cloudy Water Dosage Rate: (no premixing required)

1oz per 5,000 gallons of pool water

Note: For best results, feed small amounts multiple times per day with Natural Chemistry's **Automatic Dosage Dispenser**. Product can also be applied directly to pool.



SKU#	PRODUCT SIZE	UNITS/CASE
03557	1 gallon	4
03560	5 gallon	1

STAINfree Extra Strength

- 100% ascorbic acid - premium stain fighter!
- The industry's leading ion-exchange metal stain remover
- All natural way to eliminate metal staining
- Compatible with all sanitizing systems

Directions for use:

Large Area Treatment of Pool Surface Metal Stains:

1. Balance pool water.
2. Lower chlorine level to 1ppm or less.
3. Add 11lb per 10,000 gallons around the perimeter of the pool, with pump running. Brush pool thoroughly. After brushing, if stains are not completely removed add more **Stainfree Extra Strength**.
4. A pulp based filter aid **MUST** be used in cartridge and sand filters. If you have a DE filter, make sure it is charged properly with DE.
5. Once the **Stainfree Extra Strength** has been added, apply **Stain & Scale Control Commercial AF** at a rate of 32oz per 10,000 gallons.
6. Vacuum pool slowly and thoroughly.
7. After 24 hours, clean out your filters. Sand filters: backwash for at least 3 minutes and then rinse for 2 minutes. Cartridge filters: clean filter and filter tank thoroughly. DE filter: backwash and recharge with DE.
8. Test and rebalance. Note: DO NOT SHOCK THE POOL FOR 1 WEEK. Note: If chlorine level is low, add small amounts of chlorine. Do not exceed 2ppm.
9. Add **Stain & Scale Control Commercial AF** weekly at a rate of 4oz per 10,000 gallons to prevent stains from reoccurring.

For Spot Treatment of Pool Surface Metal Stains:

1. Balance pool water.
2. Lower chlorine level to 1ppm or less.
3. If stains are near pool water returns, shut off the circulation pump.
4. Add directly to the pool surface at the spot of the metal stain.
5. Pour through a pole or tube to direct the product to the spot of the stain, or add product to a porous nylon bag and apply directly to the stain.
6. Brush the pool surface
7. Re-start the circulation pump
8. Add **Stain & Scale Control Commercial AF**

Initial Dose: 32oz per 10,000 gallons

Maintenance Dose Weekly: 4oz per 10,000 gallons



SKU#	PRODUCT SIZE	UNITS/CASE
07390	16 lbs	1

Quick-Dissolve Stabilizer

- pH friendly
- Dissolves instantly
- Concentrated formula
- Protects chlorine instantly
- Reduces chlorine usage

Directions for use:

With circulating system operating:

1. Maintain proper chemical levels in the pool.
2. Backwash/clean the filter.
3. By-pass or disconnect chemical controller (if applicable).
4. Slowly add **Quick-Dissolve Stabilizer** directly to the skimmer, gutter or surge tank.
5. Reconnect the chemical controller.
6. Resume normal pool operation.
7. Test chemical readings for appropriate levels.
8. Apply in accordance with your state and local pool regulations.



GALLONS OF WATER	ADD	TO RAISE CYA LEVEL APPROXIMATELY
10,000	1 lb	9 ppm
10,000	2 lbs	18 ppm
50,000	10 lbs	18 ppm
100,000	20 lbs	18 ppm
125,000	25 lbs	18 ppm

SKU#	PRODUCT SIZE	UNITS/CASE
07411	25 lbs	1

Stain & Scale Control Commercial AF

- The industries most advanced polymer based stain & scale inhibition product, borrowed from the nuclear industry
- Compatible with all pool surfaces
- Deactivates iron, copper and other trace metals
- Phosphate free formula
- Controls scale from forming on salt generator cells

Directions for use:

Initial Dose: Add 32oz of **Stain & Scale Control Commercial AF** per 10,000 gallons of pool water, directly to pool. If water hardness level is above 500ppm, or metal readings are above 1.5ppm, double the recommended dose.

Maintenance Dose for Scale Control- MONTHLY:

Add 5oz per 10,000 gallons of pool water per month.

Maintenance Dose for Metal Control- WEEKLY:

Add 4oz per 10,000 gallons of pool water per week.

Always add product to balanced pool water. Do not add product within two days of adjusting calcium hardness or during a full pool acid bath.

Note: For new, remodeled or refinished pools, add this product following initial dosage instructions. Add product to pool water during filling to reduce the chance of plaster dust formation, scaling, and metal staining.

Note: Do not use with biguanides.



COMMERCIAL PRODUCTS

SKU#	PRODUCT SIZE	UNITS/CASE
07540	1 gallon	4
07530	5 gallon	1

Automatic Dosage Dispenser

- Peristaltic self priming
- 14 GPD at 30psi
- 115 VAC 50/60Hz
- NSF 50
- Water and sunlight resistant enclosure with a digital liquid crystal display
- Easy installation
- Programs in minutes with push button programming



SKU#	PRODUCT SIZE	UNITS/CASE
86440	n/a	1

Orthophosphate Test Kit

- Lab quality test accurately measures the orthophosphate level in water from 0ppb-2500ppb
- Information from readings determines the **PHOSfree** dosage required to reduce phosphate levels to near zero
- Algae must be treated prior to testing or lowering phosphates. Chlorine must be under 5ppm before testing phosphates



SKU#	PRODUCT SIZE	UNITS/CASE
00080	n/a	1

HOW TO: General Opening & Closing

Step #1: Test & Adjust all Levels

Alkalinity: 80-120ppm (depending on pool finish)

pH: 7.2-7.8

Chlorine: 1-3ppm

TDS: 1500ppm (above start up concentration)

Calcium Hardness: ideal range is 200-400ppm

Cyanuric Acid (CYA): 30-50ppm

Phosphates: below 100ppb

Note: Alkalinity should always be adjusted first

Step #2: When levels have been adjusted

- Add: **HASSLEfree Kit** (1 box per 20,000 gallons) OR **Pool Magic Spring & Fall +PHOSfree** (1 bottle per 25,000 gallons)

Step #3: One week later

- Test phosphate level and treat if above 100ppb

If phosphates are 300ppb or less use **Pool Magic Spring & Fall +PHOSfree**

If phosphates are above 300ppb use **PHOSfree**

If phosphates are above 1000ppb use **PHOSfree Commercial Strength**

Step #4: During the season

- Use a weekly maintenance routine of **Pool Perfect+PHOSfree** for chlorine pools OR **Salt Water Magic Liquid** monthly for salt pools once phosphates are below 100ppb

- Test all pools for phosphates weekly

Step #5: At closing

- Balance water as per recommendations above

- When levels have been adjusted, add: **HASSLEfree Kit** (1 box per 20,000 gallons) OR **Pool Magic Spring & Fall +PHOSfree** (1 bottle per 25,000 gallons)

Note: It is important to ensure phosphate levels are 100ppb or lower before closing pool

HOW TO: Plaster Pool Start-Up Procedure

Step 1:

- When a new plaster pool's hopper is filled with 100-500 gallons of water, add **SCALEfree** at a rate of 64 ounces per 10,000 gallons. This is a double dose of product to protect the new finish. We also recommend this doubled dosage amount when the calcium level is above 500ppm in an existing pool.

Step 2:

- Evenly distribute **SCALEfree** throughout the initial 100-500 gallons of water in the hopper

Note: Be sure to avoid direct contact of **SCALEfree** with the surface of the pool during this addition process

Step 3:

- After the proper amount of **SCALEfree** is added, be sure to brush the surface daily towards the main drain (if possible) for the first three days to ensure the removal of lingering dust and debris from floor and walls

Step 4: After Initial Addition:

Balance the pool water

- Adjust pH level, alkalinity (TA) and calcium hardness to recommended levels

- Add sanitizer and cyanuric acid as recommended

Note: Be sure to follow the pool surface manufacturer's guidelines for water chemistry

Step 5: Maintenance:

To ensure long term protection of the plaster finish, continue with a maintenance dose of **SCALEfree** at a rate of 5oz per 10,000 gallons or 10oz per 20,000 gallons.

HOW TO: Clean Up Dead Algae

Step #1: - Kill algae as per dealer recommendations

Step #2: - Once algae has been killed and chlorine level is below 5ppm - add **Pool First Aid** per label directions. The dosage rate is 1 bottle per 33,000 gallons or 1 cap (4oz) per 2,000 gallons. Allow product to circulate for at least 48 hours.

Important: Performance is reduced with high sanitizer levels. For optimum results add product when chlorine level is below 5ppm. Wait 48 hours to shock pool after adding this product. If water temperature is below 70°F **Pool First Aid** will work more slowly. Allow additional time for results.

Step #3: - Vacuum and clean filter if required

HOW TO: Treat Phosphates

When to test for phosphates (ideal level is below 100ppb):

Algae must be treated as per dealer recommendations.

Important: Algae must be treated prior to testing and treating phosphates. Chlorine must be below 5ppm prior to testing phosphates.

Results determine which products to use for phosphate removal:

<u>Phosphate level</u>		<u>Product</u>
under 300ppb	use	Pool Magic Spring & Fall +PHOSfree
300-900ppb	use	PHOSfree
1000ppb +	use	PHOSfree Commercial

Note: Do not add more than 1.5L per application.

- If you have the option to vacuum to waste and would like to use a floc, use **PHOSfloc** at a rate of 1 bucket per 10,000 gallons.

Note: Test source water to ensure you will not raise phosphate levels when replacing water that is lost if you use a product that requires vacuuming to waste (**PHOSfloc**)

How to add PHOSfree products: Once you have chosen which **PHOSfree** product you will use from the list above, add product through the skimmer. **Note:** Ensure filter is clean before adding **PHOSfree** products.

- Run pump continuously for 48 hours or 8 hours per day for 1 week
- Backwash filter & retest phosphate levels

How to add PHOSfloc:

With circulation system on, adjust pool water pH to 7.0-7.2 before adding **PHOSfloc** - VERY IMPORTANT
Add 4lbs per 10,000 gallons of **PHOSfloc** to a large bucket of water and mix.

If pool has a recirculate (filter by-pass) setting, add **PHOSfloc**/water mixture slowly to skimmer and allow water to circulate for 1 hour.
DO NOT ADD DIRECTLY TO FILTER.

If your pools has no recirculation (filter by-pass) turn filter system off and broadcast **PHOSfloc**/water mixture over the water while walking around the pool.

Once phosphates are 100ppb or lower, start maintenance program to control phosphate levels.

Use **Pool Perfect+PHOSfree** weekly for chlorine pools or **Salt Water Magic Liquid** monthly for salt pools.

HOW TO: Enjoy the Perfect Pool Program

Perfect Pool Program Instructions

At opening/start-up add:

- Balance water chemistry
- **HASSLEfree Kit** - one box per 20,000 gallons **AND Foundation** - 5lbs per 6,000 gallons or 16.5lbs per 18,000 - 22,000 gallons

Note: Do not add **Foundation** if pH is above 7.8 - After adding **Foundation**, test pH and chlorine levels weekly and adjust as necessary.

During the season:

- Use a weekly maintenance routine of **Pool Perfect+PHOSfree** for chlorine pools **OR Salt Water Magic Liquid** monthly for salt pools
 1. Test all pools for phosphates weekly.
 2. Address phosphate issues as needed.

Recommended level: Below 100ppb

Phosphates up to 900ppb use: PHOSfree

Phosphates 1000ppb+ use: PHOSfree Commercial

At Closing:

- End the season with the **HASSLEfree Kit** (1 box per 20,000 gallons)
- If a lot of water has been lost through the season, add additional **Foundation** to the pool

Notes:

- Keeping the phosphate levels below the recommended 100 ppb reading will ensure success with this program
- Using **Foundation** at start-up in addition to the weekly maintenance of **Pool Perfect+PHOSfree** (or **Salt Water Magic Liquid** monthly) will add an extra layer of protection
- **Foundation** addition - follow manufacturer's recommendation as to when this product can be added to a new plaster pool

Combining the Perfect Pool Program with your regular sanitizer will provide the ultimate water quality with less work!

HOW TO: Clear Cloudy Water

Note: Ensure circulation & filtration are operating properly and running for sufficient time per day.

Test: **Alkalinity** - Ideal is 80-120ppm, depending on pool finish
pH - 7.2-7.8

Free sanitizer level - Chlorine: 1-3ppm. Ensure that free sanitizer level is equal to total sanitizer level. If not, shocking is required.

Phosphate level - Ideal is below 100ppb

If all of the above are balanced or in range, cloudy water may be a symptom of:

Early sign of algae bloom:

- Kill algae as per dealer recommendations
- Once algae is completely treated, and pool has been vacuumed, add **Pool First Aid** (1 bottle per 33,000 gallons) to remove small suspended particles of the dead algae

Important: Performance is reduced with high sanitizer levels. For optimum results add product when chlorine level is below 5ppm. Wait 48 hours to shock pool after adding **Pool First Aid**. If water temperature is below 70°F **Pool First Aid** will work more slowly. Allow additional time for results.

High Non-living Organic Load:

- Add one bottle of **Pool First Aid** to pool per 33,000 gallons (or 1 capful per 2000 gallons), then proceed with a weekly maintenance program of **Pool Perfect+PHOSfree** (1 capful per 8,000 gallons weekly)

NOTE: Do not add either of these products if chlorine level is above 5ppm.

Suspended Particles:

- Add a clarifier by broadcasting it over the surface of the pool
- Choose from either **Clear & Perfect** polymer clarifier at a rate of 1oz per 4,000 gallons **OR Clear** natural clarifier at a rate of 1oz per 5,000 gallons to clear cloudy water

HOW TO: Reduce Chlorine Demand

High Chlorine Use or Frequent Shocking

Things to Test:

Cyanuric Acid:

- Levels should be: 30-50ppm in a chlorine pool
- If level is below recommendations, add **Instant Conditioner** to instantly raise cyanuric levels

Note: 1 gallon of **Instant Conditioner** raises CYA level by 32ppm per 10,000 gallons

High Non-living Organic Load:

- High non-living organic load is caused by:
 - Suntan lotions
 - Cosmetics
 - Pollen
 - Animals swimming in pool
- Reduce non-living organics by using **Pool First Aid** at a rate of 1 bottle per 33,000 gallons
- To remove existing non-living organic build-up, we suggest using **Purge** which will clean plumbing. Once the **Purge** process is complete, a weekly maintenance of **Pool Perfect** (1 capful per 8,000 gallons) will continually break down non-living organic contamination.

HOW TO: Purge Hot Tub Plumbing & Jetted Bathtubs

Hot Tub Plumbing

Step 1:

- Remove cartridge filter elements.

Note: For complete spa cleaning, soak cartridge filter overnight in **Filter Perfect**, the only natural filter cleaner.

Step 2:

- With spa water temperature at 95°F or higher, add entire contents of 33.9oz **Spa Purge** bottle to spa water (1 bottle of **Spa Purge** for spas up to 1000 gallons)

Step 3:

- Run jets a minimum of 5 minutes (some foaming may occur- if excessive foaming occurs turn jets off)

Step 4:

- Maintain water temperature and allow spa to circulate overnight with jets off

Step 5:

- Drain, rinse and then refill spa and reinstall filter elements and proceed with normal spa maintenance

Jetted Bathtubs

Step 1:

- Fill tub with hot water (ideally above 95 degrees), above the jets then add 16oz (1/2 bottle) of **Spa Purge**

Step 2:

- Once water level is above the jets, run the jets for a minimum of 5 minutes. Some foaming may occur. If excessive foaming occurs, turn jets off.

Step 3:

- Let sit overnight, then drain

Step 4:

- Drain and clean the surface of the tub as non-living organic build up may have been displaced from the plumbing into the tub

HOW TO: Remove Metal Stains

Note: Operating the pool for a couple of days without chlorine can create an algae concern. Follow your pool dealer's recommendations on steps you may take to protect your pool from algae during this stain removal process.

Step #1:

Balance pool water chemistry - Confirm the pool water is in balance (pH, Alkalinity, Calcium Hardness, CYA)

Note: Stain removal products work best when the pH is on the lower side of acceptable range (7.2)

Step #2:

Take a vitamin C tablet and apply onto stained area. If the stain is removed or lightened by the vitamin C tablet, then the **STAINfree** products will work.

Step #3:

Identify which **STAINfree** product to use. For minor staining (small areas or steps), use **STAINfree** (part #07400)

For faster results on older stains that appear on the floors and walls, use **STAINfree Extra Strength** (part #07395)

Step #4:

Lower chlorine level to 1 ppm or less

- A high chlorine level or adding oxidizing agents during the process will prevent **STAINfree** products from working as designed

- Do not swim until stain removal process is complete and normal chlorine residual is established

Step #5:

A non-polymer filter aid **must** be used with sand filters and cartridge filters to remove the very small particles created during the stain removal process

- Water clarifiers should not be used during this process

Step #6:

With the pump running, add 1lb of **STAINfree** for every 10,000 gallons for minor staining.

For older or more difficult stains, add 1lb per 10,000 gallons of **STAINfree Extra Strength** with the pump running

Step #7:

Brush heavily stained areas (the more you brush, the better the results will be)

Step #8:

Run pool pump until the process is complete

- Backwash as needed and reapply filter aid after each backwash

Step #9:

Add 33.9oz (1 L) of **METALfree** for every 20,000 gallons immediately after brushing

Step #10:

After 24 hours, vacuum the entire surface of the pool to the filter or waste

*Note: It is important to vacuum every inch of the bottom to remove any trace of metal particulate

Step #11:

Sand filters should be backwashed twice and rinsed thoroughly, DE and cartridge filters must be broken down and cleaned thoroughly

Step #12:

Rebalance water chemistry. DO NOT SHOCK for at least 1 week. (Note: If chlorine level is low, add small amounts of chlorine. Do not exceed 2ppm)

- For salt generator pools, a granular shock is recommended instead of turning the generator to shock

Step #13:

Use **METALfree** to help prevent future staining. Apply 4oz per 10,000 gallons once a week.



**NATURAL
CHEMISTRY**®

Performance Guaranteed

visit us on-line at: www.naturalchemistry.com